

# Flinders taking to the skies

## SKYWAY POSSIBILITY AT UNI

"We are at initial discussion stage but we are excited by the possibilities before us," Mr Banks said.

Mr Banks said more on-campus carpark spaces "was a major consideration" for the university. But he was confident future public transport links to the university would "be so good" that it would reduce students' reliance on cars.

These public transport options included an extended Tonsley rail line, as well as a 500m elevated rail link - known as SkyWay - which has been proposed to run from the upper oval carpark to the campus.

Mr Banks was in "productive talks" with SkyWay's boss, former Transport Department chief executive Rod Hook, about how the un-costed development could support the ambitious project. "One suggestion is the possibility of linking SkyWay to the new building and using lifts in that building (to the upper levels)," he said.

Mr Hook had planned to start work on the Flinders SkyWay this year, but has decided to delay the \$13 million project until the multi-storey building was complete.

He said launching the line from a higher starting point would make it easier to build the elevated train line above trees over University Drive to the campus.

Students have long called for more parking and cheaper rates around the university, while Bedford Park residents want additional



on-campus spaces because students are clogging their streets.

Flinders University Students Association president Caleb Pattinson would welcome more on-campus carparks provided the cost was "not unreasonable".

Day parking is \$4.60, while two-hour parking is \$1.60.

Bedford Park Residents Association president Reynold David agreed, saying the university should subsidise parking rates for students.

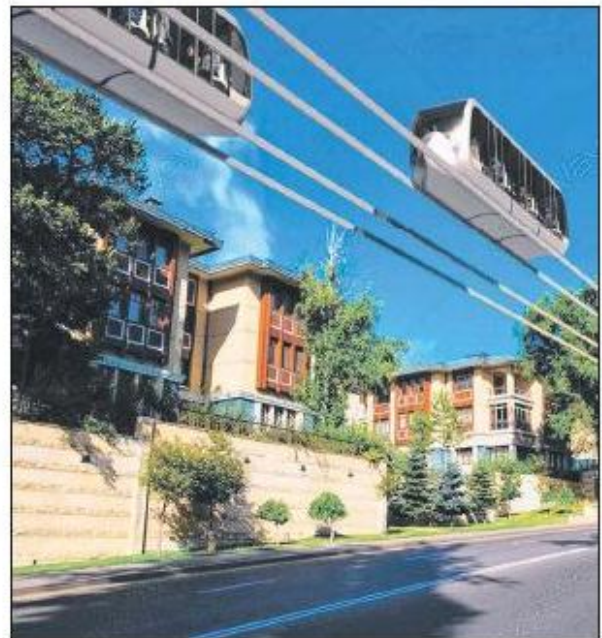
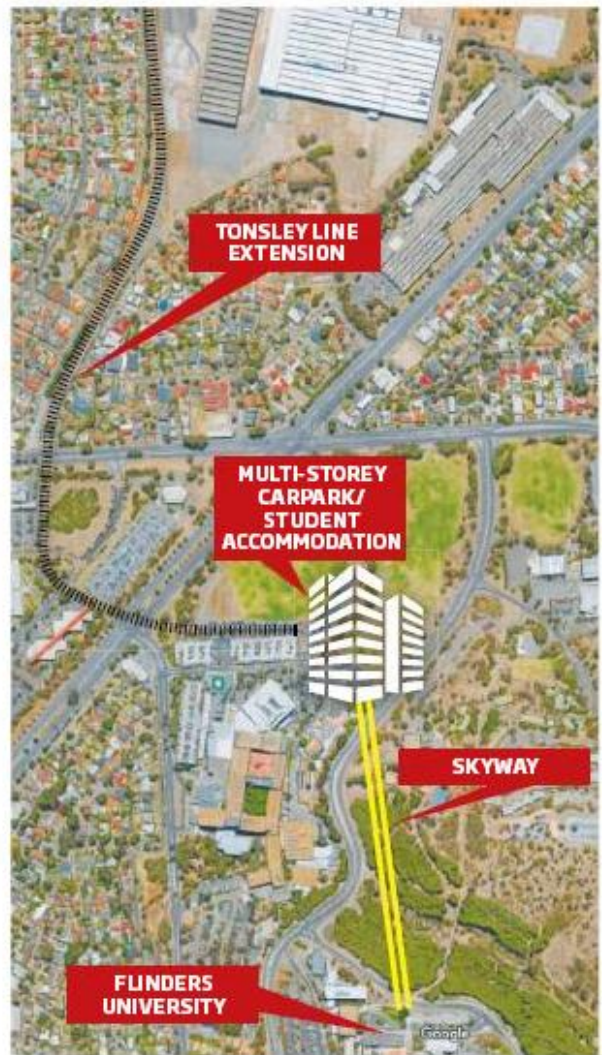
"Student costs are constantly going up, for books and fees," Mr David said.

"You can understand why students choose to park off-campus."

Meantime, Unley Council has supported a proposal to look at SkyWay for Unley Rd. Mr Hook and his business partner Mauree Wauchope spoke to a council committee about the concept. Mr Hook said the elevated rail lines would be suited to Unley Rd because they would not disrupt traffic or reduce carparks.

Committee chair Michael Hewitson was excited by the proposal.

"It is quite stunning in terms of its design and I think we would all be keen to see how this develops," Cr Hewitson said.



How the proposed Skyway project at Flinders University could look. Picture: SUPPLIED